

# MONTHLY MEMBERSHIP PROGRESS REPORT

LOCATION INDIA

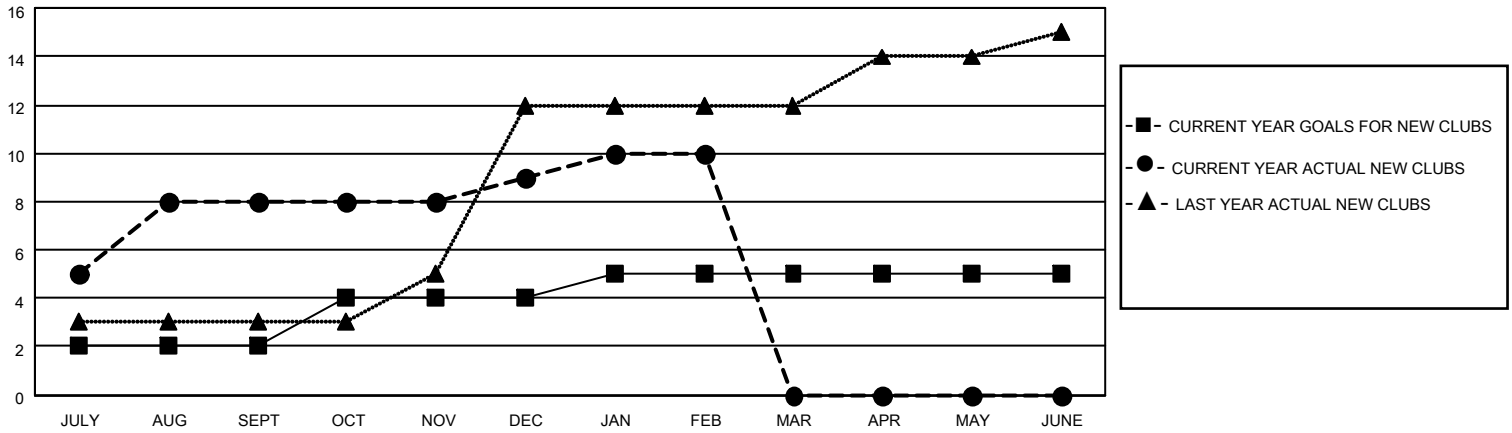
District 322 A

Results as of: 2/28/2022

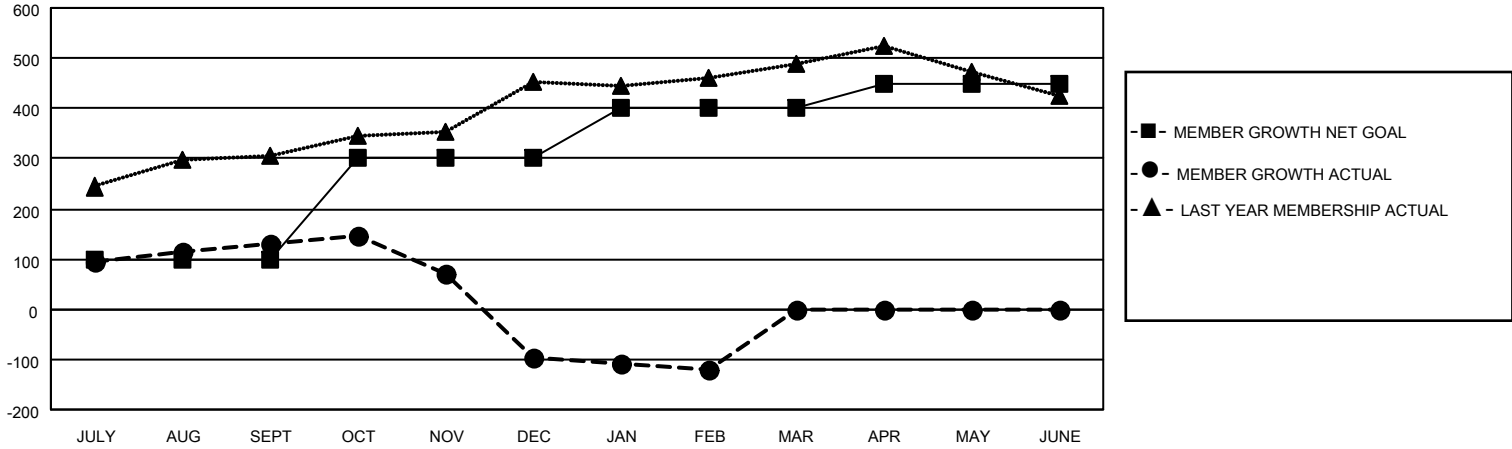
Clubs			
RESULTS FOR 2021-2022			
QUARTER	NEW CLUB GOAL	NEW CLUBS	DROPPED CLUBS
JULY/AUG/SEPT	2	8	3
OCT/NOV/DEC	2	1	4
JAN/FEB/MAR	1	1	2
APR/MAY/JUNE	0	0	0

Members			
RESULTS FOR 2021-2022			
QUARTER	MEMBER GROWTH NET GOAL	MEMBER GROWTH ACTUAL	DROPPED MEMBERS ACTUAL (including transfers)
JULY/AUG/SEPT	100	343	197
OCT/NOV/DEC	200	72	299
JAN/FEB/MAR	100	75	91
APR/MAY/JUNE	50	0	0

**GOALS AND ACTUAL NEW CLUBS CUMULATIVE**



**GOALS AND ACTUAL MEMBERS CUMULATIVE**



<b>DROPPED CLUBS: 9</b>	
<b>DROPPED MEMBERS</b>	
DECEASED	11
CLUB CANCELLED	79
OTHER	497
<b>TOTAL</b>	<b>587</b>

45 CLUBS OF 97 ADDED 1 OR MORE NEW MEMBERS

[CLICK HERE FOR CUMULATIVE MEMBERSHIP DATA](#)

<u>GENDER DISTRIBUTION</u>	
MALE	2,273 (67.69%)
FEMALE	1,084 (32.28%)
NON BINARY	0 (0.00%)
PREFER NOT TO ANSWER	1 (0.03%)
<b>TOTAL FAMILY UNIT MEMBERS</b>	<b>1,600</b>
<b>FAMILY MEMBERS PAYING HALF DUES</b>	<b>856</b>